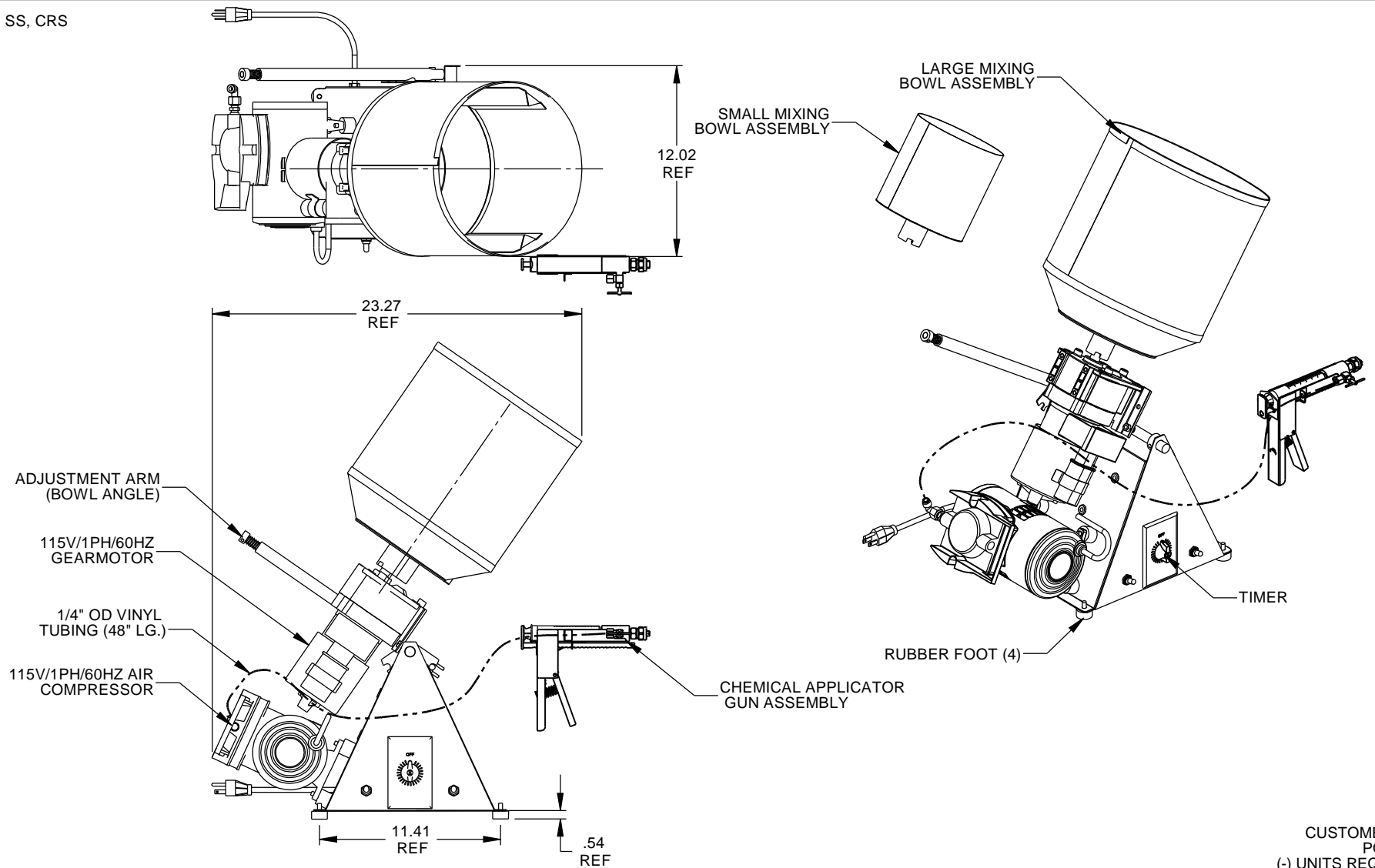



CONSTRUCTION: SS, CRS
DIM TOL. $\pm .25$

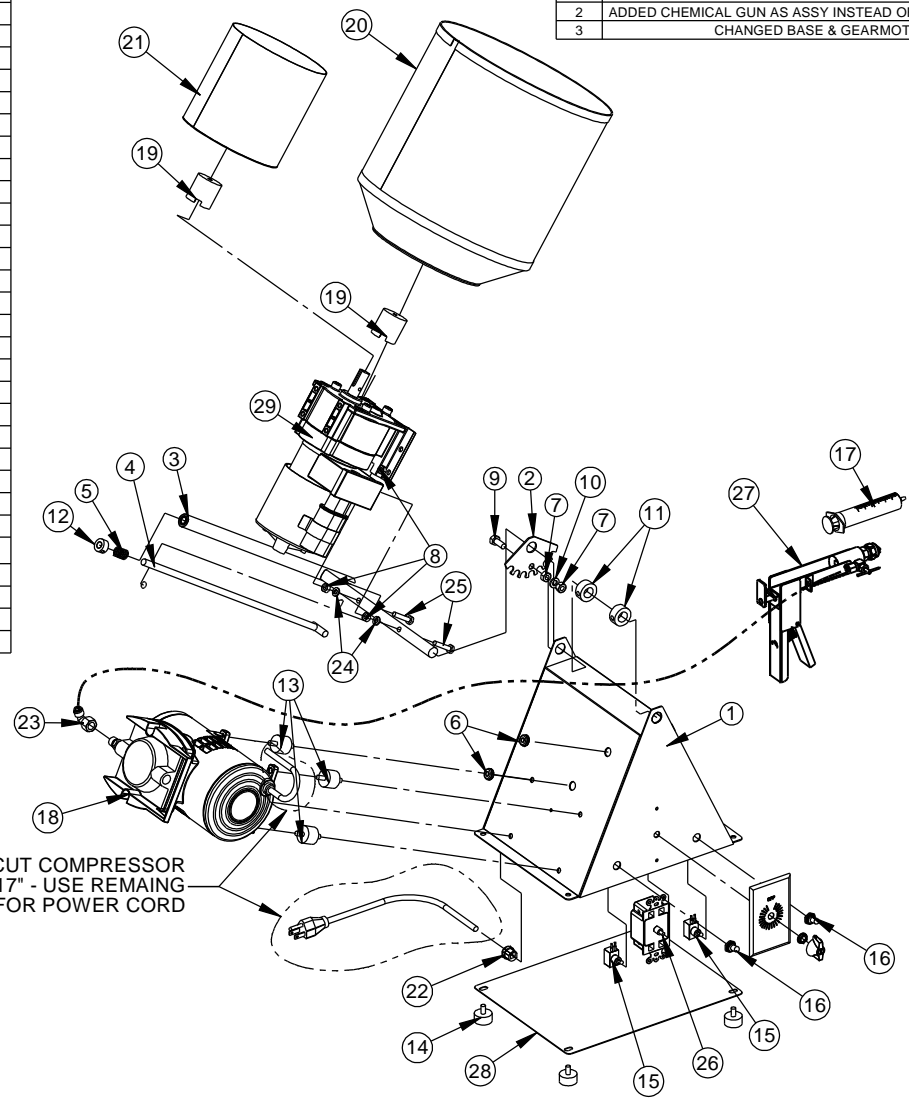


CUSTOMER
PO#
(-) UNITS REQ'D

ASSUMED SYMMETRY OF PARTS IS USED, UNLESS OTHERWISE DIMENSIONED 1 PLACE (X) $\pm .060$ 2 PLACE (XX) $\pm .015$ 3 PLACE (XXX) $\pm .005$ 4 PLACE (XXXX) $\pm .0005$ TOLERANCES UNLESS OTHERWISE NOTED FRACTIONS $+1/32$ ANGLES $+1/2$	MFG. APPROVAL XX	DATE 3/1/07	DRAWN BY SRS	DATE 2/20/07	Gustafson  www.gustafson.com
	SCALE 1:6	REDRAWN BY -	CHECKED BY XX	DATE 3/1/07	
THIS DRAWING IS BAYER CROPSCIENCE PROPERTY FOR USE WITH GUSTAFSON EQUIPMENT ONLY. ALL DESIGNS AND INVENTION RIGHTS.	TITLE BLT ASSEMBLY			PART NUMBER 224	REVISION 3

ITEM NO.	PART NUMBER	Title	QTY.
1	33470100rev1	MAIN BODY WELDMENT	1
2	33460000	ADJUSTMENT BRACKET	1
3	33420000rev1	ADJUSTMENT ARM WELDMENT	1
4	33410000rev1	INSERT ARM	1
5	33430000	TENSION SPRING	1
6	33400300	RUBBER GROMMET	2
7	24460100	5/16-18 HEX NUT SS	2
8	32530000	1/4-20 HEX NUT	4
9	25330200	5/16-18 X .75 HEX BOLT	1
10	24450100	5/16" LOCKWASHER - SS	1
11	17960300	5/8" SET COLLAR - ZINC	2
12	16240000	3/8" SET COLLAR - ZINC	1
13	33350000	RUBBER MOUNT FOOT	4
14	33330000	RUBBER FOOT	4
15	25830	TOGGLE SWITCH	2
16	42515	RUBBER SWITCH BOOT	2
17	33580100	30cc SYRINGE	5
18	33340100	AIR COMPRESSOR 115V/60Hz	1
19	33510000	MOTOR/ DRUM ADAPTER	2
20	33520000	LARGE MIX BOWL WELDMENT	1
21	33530000	SMALL MIX BOWL WELDMENT	1
22	33365000	ELEC CORD STRAIN RELIEF	1
23	P001213	90 DEG ELBOW 1/4" FPT X 1/4" HOSE	1
24	24380000	1/4" LOCKWASHER - SS	2
25	17950700	1/4-20 X 1-1/4" SS HEX BOLT	2
26	33320000	TIMER ASS'Y	1
27	33690110rev0	CHEMICAL GUN ASSEMBLY	1
28	33310000rev1	BASE PLATE	1
29	P001464	DAYTON GEARMOTOR 1/15HP - 30 RPM	1

REVISIONS			
REV.	DESCRIPTION	DATE	APPROVED
2	ADDED CHEMICAL GUN AS ASSY INSTEAD OF PARTS PER MIKE BENNETT	10/29/2008	SRS
3	CHANGED BASE & GEARMOTOR PER ECO	3/30/2009	SRS



NOTE: CUT COMPRESSOR CORD AT 17" - USE REMAING PIECE FOR POWER CORD

CUSTOMER PO# (-) UNITS REQ'D

ASSUMED SYMMETRY OF PARTS IS USED, UNLESS OTHERWISE DIMENSIONED	MFG. APPROVAL XX	DATE 3/1/07	DRAWN BY SRS	DATE 2/20/07
1 PLACE (X) ± .060" TOLERANCES UNLESS OTHERWISE NOTED	SCALE 1:7	REDRAWN BY -	CHECKED BY XX	DATE 3/1/07
2 PLACE (XX) ± .015" FRACTIONS+1/32"	TITLE BLT ASSEMBLY			
3 PLACE (XXX) ± .005" ANGLES ±1/2"	PART NUMBER 224			
4 PLACE (XXXX) ± .0005"	REVISION 3			



PART NUMBER	224	REVISION	3
-------------	-----	----------	---