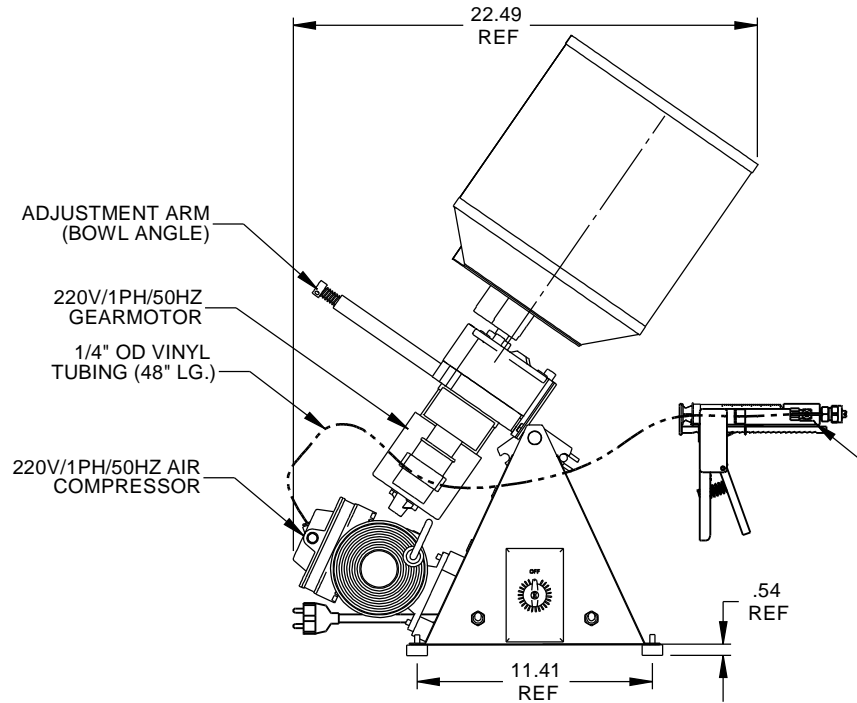
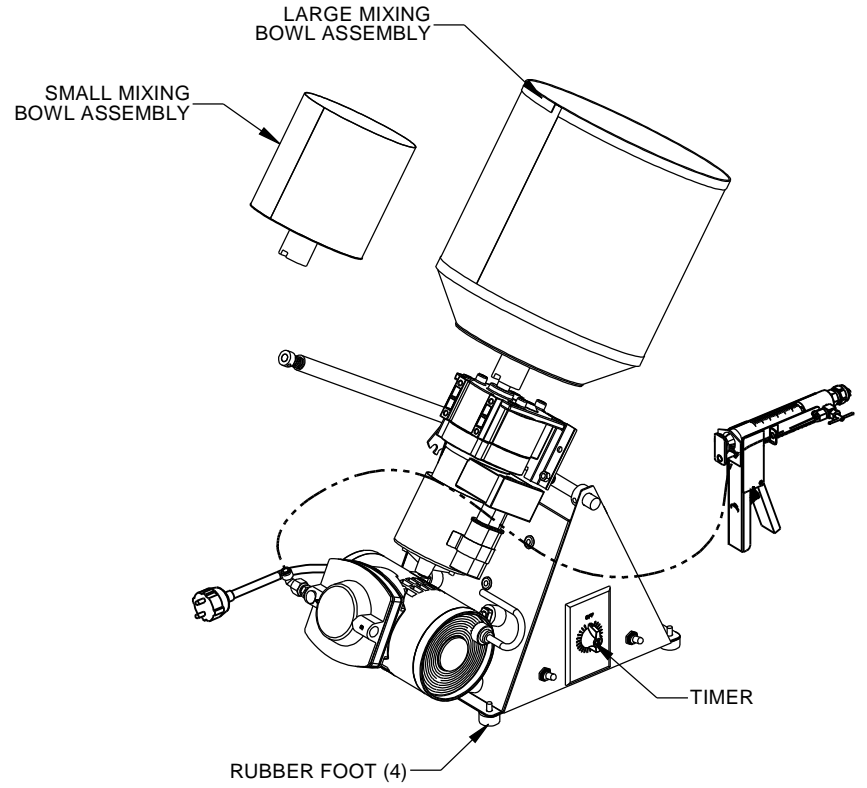
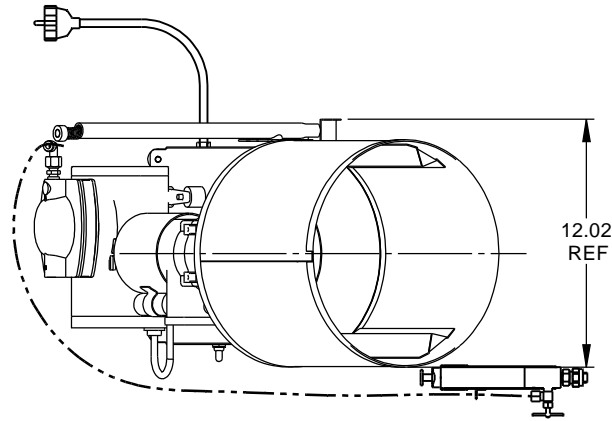



CONSTRUCTION: SS, CRS
DIM TOL. $\pm .25$

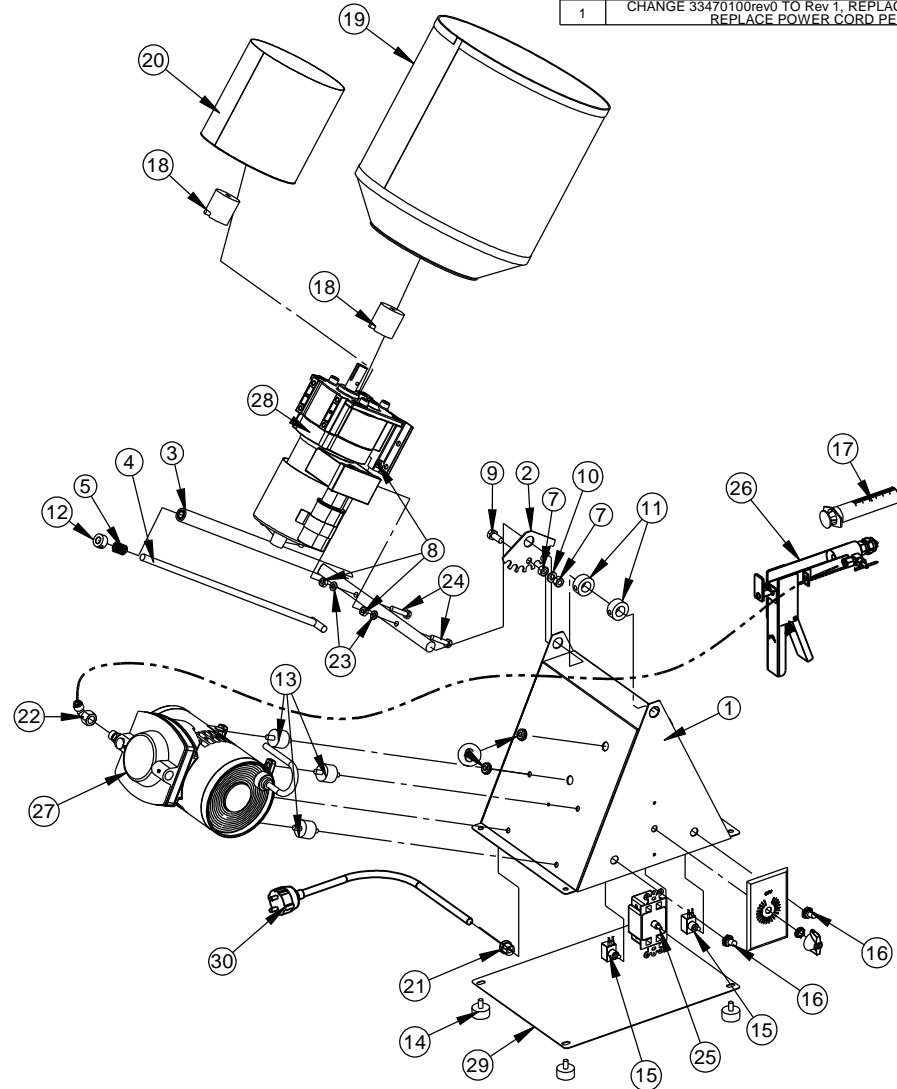


CUSTOMER
PO#
(-) UNITS REQ'D


ASSUMED SYMMETRY OF PARTS IS USED, UNLESS OTHERWISE DIMENSIONED		MFG. APPROVAL XX	DATE XX	DRAWN BY SRS	DATE 3/9/09	Gustafson  www.gustafson.com		
1 PLACE (X) $\pm .060"$ TOLERANCES 2 PLACE (XX) $\pm .015"$ UNLESS OTHERWISE NOTED 3 PLACE (XXX) $\pm .005"$ FRACTIONS $\pm 1/32"$ 4 PLACE (XXXX) $\pm .0005"$ ANGLES $\pm 1/2^\circ$		SCALE 1:6	REDRAWN BY -	CHECKED BY SRS	DATE 3/9/09			
THIS DRAWING IS BAYER CROPSCIENCE PROPERTY FOR USE WITH GUSTAFSON EQUIPMENT ONLY. ALL DESIGNS AND INVENTION RIGHTS.						TITLE BLT ASSEMBLY (50Hz)	PART NUMBER 225	REVISION 1

ITEM NO.	PART NUMBER	Title	QTY.
1	33470100rev1	MAIN BODY WELDMENT	1
2	33460000	ADJUSTMENT BRACKET	1
3	33420000rev1	ADJUSTMENT ARM WELDMENT	1
4	33410000rev1	INSERT ARM	1
5	33430000	TENSION SPRING	1
6	33400300	RUBBER GROMMET	2
7	24460100	5/16-18 HEX NUT SS	2
8	32530000	1/4-20 HEX NUT	4
9	25330200	5/16-18 X .75 HEX BOLT	1
10	24450100	5/16" LOCKWASHER - SS	1
11	17960300	5/8" SET COLLAR - ZINC	2
12	16240000	3/8" SET COLLAR - ZINC	1
13	33350000	RUBBER MOUNT FOOT	4
14	33330000	RUBBER FOOT	4
15	25830	TOGGLE SWITCH	2
16	42515	RUBBER SWITCH BOOT	2
17	33580100	30cc SYRINGE	5
18	33510000	MOTOR/ DRUM ADAPTER	2
19	33520000	LARGE MIX BOWL WELDMENT	1
20	33530000	SMALL MIX BOWL WELDMENT	1
21	33365000	ELEC CORD STRAIN RELIEF	1
22	P001213	90 DEG ELBOW 1/4" FPT X 1/4" HOSE	1
23	24380000	1/4" LOCKWASHER - SS	2
24	17950700	1/4-20 X 1-1/4" SS HEX BOLT	2
25	33320000	TIMER ASS'Y	1
26	33690110rev0	CHEMICAL GUN ASSEMBLY	1
27	P001459	AIR COMPRESSOR 220V/50Hz	1
28	P001464	DAYTON GEARMOTOR 1/15HP - 30 RPM	1
29	33310000rev1	BASE PLATE	1
30	P001465	8' SCHUKO EUROPEAN POWER CORD	1

REVISIONS			
REV.	DESCRIPTION	DATE	APPROVED
1	CHANGE 33470100rev0 TO Rev 1, REPLACE GEARMOTOR, & REPLACE POWER CORD PER ECO	3/30/2009	SRS



CUSTOMER
PO#
(-) UNITS REQ'D

ASSUMED SYMMETRY OF PARTS IS USED, UNLESS OTHERWISE DIMENSIONED	MFG. APPROVAL XX	DATE XX	DRAWN BY SRS	DATE 3/9/09	Gustafson  www.gustafson.com
1 PLACE (X) ± .060" TOLERANCES UNLESS OTHERWISE NOTED 2 PLACE (XX) ± .015" FRACTIONS+1/32" 3 PLACE (XXX) ± .005" FRACTIONS+1/32" 4 PLACE (XXXX) ± .0005" ANGLES ±1/2"	SCALE 1:7	REDRAWN BY -	CHECKED BY SRS	DATE 3/9/09	
THIS DRAWING IS BAYER CROPSCIENCE PROPERTY FOR USE WITH GUSTAFSON EQUIPMENT ONLY. ALL DESIGNS AND INVENTION RIGHTS.					TITLE BLT ASSEMBLY (50Hz)
					PART NUMBER 225
					REVISION 1