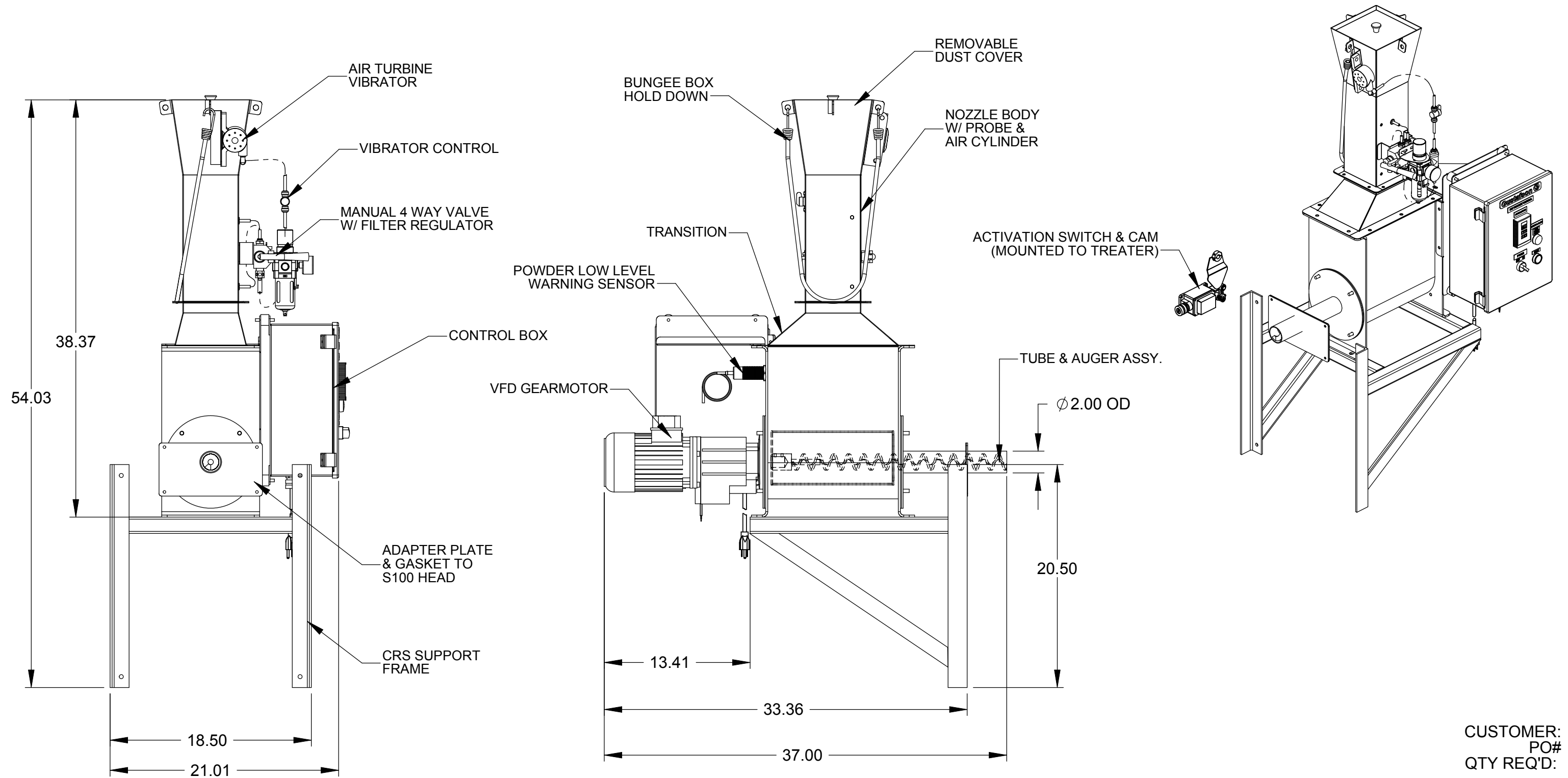



CONSTRUCTION: SS, POLY
 DIM. TOL.: ±.25
 DRY WEIGHT: 200LBS
 ELEC REQUIREMENTS: 115VAC/1PH/60HZ/9A

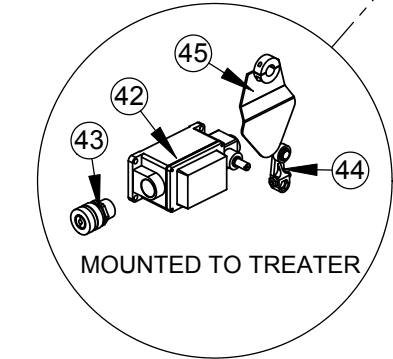
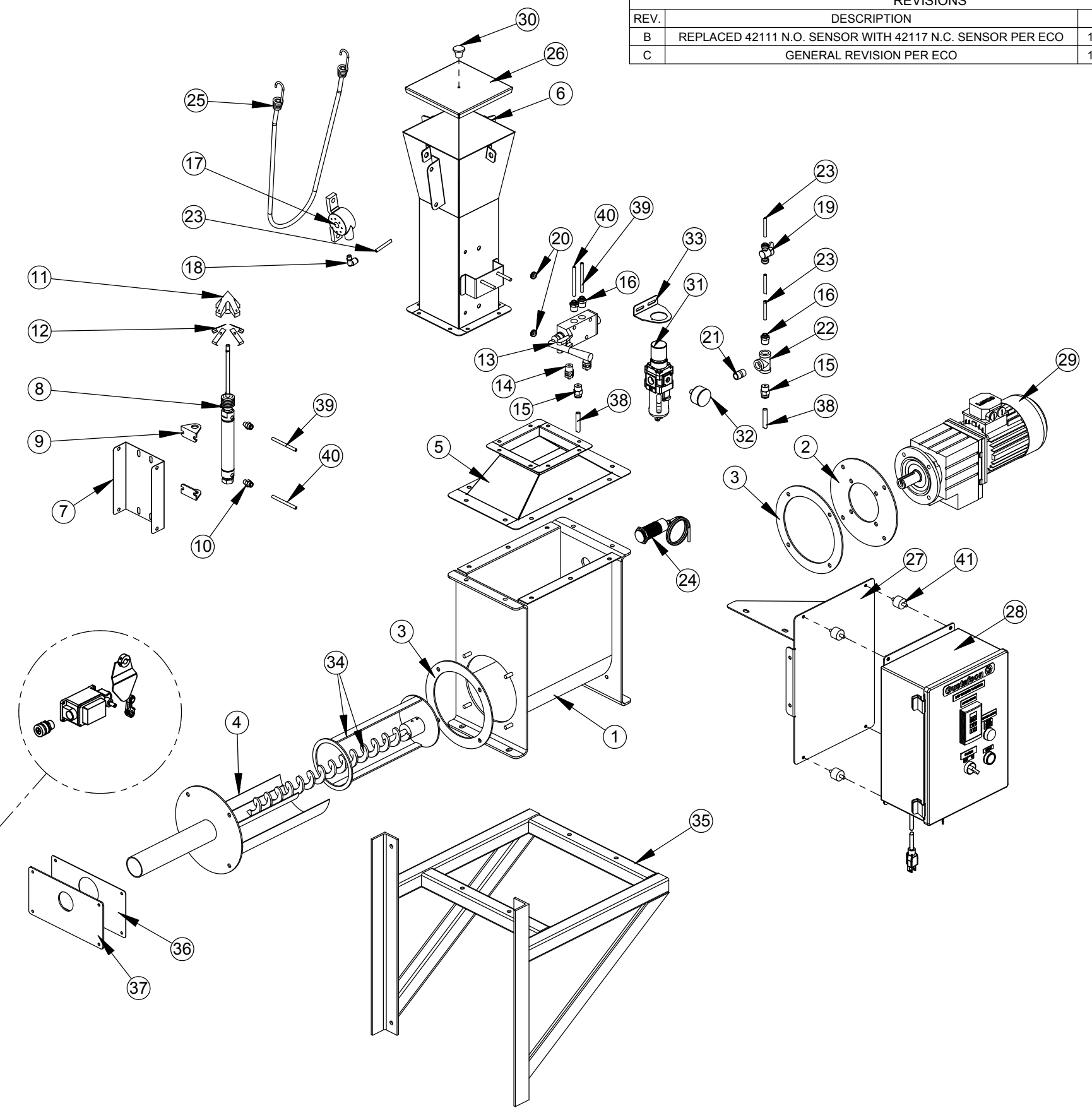


CUSTOMER:
 PO#
 QTY REQ'D:


ASSUMED SYMMETRY OF PARTS IS USED, UNLESS OTHERWISE DIMENSIONED 1 PLACE (X) ±.060" TOLERANCES- 2 PLACE (XX) ±.015" UNLESS OTHERWISE NOTED 3 PLACE (XXX) ±.005" FRACTIONS ±1/32" 4 PLACE (XXXX) ±.0005" ANGLES ±1/2"	MFG. APPROVAL X	DATE X	DRAWN BY SRS	DATE 8/15/07	 www.gustafson.com
	SCALE 1:9	REDRAWN BY -	CHECKED BY GAR	DATE 10/31/08	
THIS DRAWING IS BAYER CROPSCIENCE PROPERTY FOR USE WITH GUSTAFSON EQUIPMENT ONLY. ALL DESIGN AND INVENTION RIGHTS.	TITLE DRY DELIVERY FOR AM/ PD			PART NUMBER A416000C	REVISION -

ITEM NO.	PART NUMBER	TITLE	QTY.
1	A007501B	BODY WLDT	1
2	A007531A	ADAPTER PLATE	1
3	A007529A	FEED TUBE GASKET	2
4	A416060A	AUGER TUBE WLDT	1
5	A260024A	ADAPTOR TRANSITION	1
6	A260235G	BODY WLDT	1
7	A260255A	ACTUATOR MOUNT PLATE	1
8	P001096	4" STROKE AIR CYLINDER	1
9	P001097	FOOT BRACKET	2
10	P000121	Press Lock Fitting: 1/8"NPT x 1/4" Tube	2
11	A260530B	PROBE	1
12	A260531A	PROBE FINGER	4
13	P001098	MANUAL 4-WAY AIR VALVE	1
14	P001283	FLOW CNTRL MUFFLER: 3/8"NPT	2
15	27551400	Press Lock Fitting: 3/8"NPT x 3/8" Tube	2
16	24930000	Press Lock Fitting: 3/8"NPT x 1/4" Tube	3
17	P001094	TURBINE VIBRATOR	1
18	P000017	Press Lock Fitting: 1/8" NPT X 1/4" Tube, 90deg	1
19	P001104	1/4" PLASTIC SHUT OFF VALVE	1
20	33400300	RUBBER GROMMET	2
21	28031600	3/8"NPT SS CLOSE NIPPLE	1
22	18940200	3/8"NPT #150 SS TEE	1
23	24980000	1/4" OD LDPE TUBING	4
24	42117	N.C. CAPACITIVE 30mm SENSOR	1
25	P001095	BUNGEE CORD	1
26	A260301A	DUST COVER	1
27	A260805A	CONTROL MOUNT WELDMENT	1
28	E005300B	DRY TO DRY CONTROL	1
29	P000947	VFD GEARMOTOR 44.5:1	1
30	30200100	1"DIA PLASTIC KNOB - #8-32	1
31	80970100	3/8" NPT Filter Regulator	1
32	80970300	1/8"NPT PRESSURE GAUGE: 160 PSI	1
33	A260009A	FILTER REGULAR BRACKET	1
34	A416055A	AUGER WLDT	1
35	A416040A	AM/PD DDS MOUNT FRAME WLDT	1
36	A416011A	POWDER FRONT COVER	1
37	A416012A	DDS FEEDER TUBE GASKET	1
38	24060000	3/8" OD LDPE TUBING	1 FT
39	P000304	1/4" Opaque Blue PU Tubing	1 FT
40	P000303	1/4" Opaque Black PU Tubing	2 FT
41	33350000	RUBBER MOUNT FOOT	4
42	42040	TIME-DELAY LIMIT SWITCH	1
43	42150	CORD CONNECTOR (WHITE)	1
44	42452	ROLLER LEVER - 1.5" RADIUS	1
45	32500000	TRIP SWITCH CAM WLDT	1

REVISIONS			
REV.	DESCRIPTION	DATE	APPROVED
B	REPLACED 42111 N.O. SENSOR WITH 42117 N.C. SENSOR PER ECO	10/31/2008	GAR
C	GENERAL REVISION PER ECO	11/25/2008	SRS



DETAIL B
SCALE 1 : 8

ASSUMED SYMMETRY OF PARTS IS USED, UNLESS OTHERWISE DIMENSIONED	MFG. APPROVAL X	DATE X	DRAWN BY SRS	DATE 8/15/07	 www.gustafson.com
1 PLACE (X) ±.060" TOLERANCES- 2 PLACE (XX) ±.015" UNLESS OTHERWISE NOTED 3 PLACE (XXX) ±.005" FRACTIONS ±1/32" 4 PLACE (XXXX) ±.0005" ANGLES ±1/2"	SCALE 1:11		CHECKED BY GAR	DATE 10/31/08	
THIS DRAWING IS BAYER CROPSCIENCE PROPERTY FOR USE WITH GUSTAFSON EQUIPMENT ONLY. ALL DESIGN AND INVENTION RIGHTS.					TITLE DRY DELIVERY FOR AM/ PD
				PART NUMBER A416000C	REVISION -