

AWDS



Automatic Weight Dispensing System



Digital Weight Indicator

Digital display of on-scale weight for reference and State calibration certification.



Features & Benefits

The AWDS is an automated chemical slurry blending system, which utilizes the specific gravity (weight per volume) of each individual chemical to adjust the delivery of that individual chemical. The operator will select the order in which the chemicals are delivered.

The standard system allows for the mixing of up to ten chemicals (including water) in the PSD and the blending of up to four additional chemicals, when the slurry is transferred to the CBP tank.

These four additional chemicals are generally reserved for colorant, high profile or limited shelf life chemicals.

Delivery of the water is broken into two segments. The first segment is delivered prior to the introduction of other chemicals to promote a homogenous blending of the chemical. The final portion of water (10% - 50% as selected by the operator) is added at the completion of the chemical delivery.

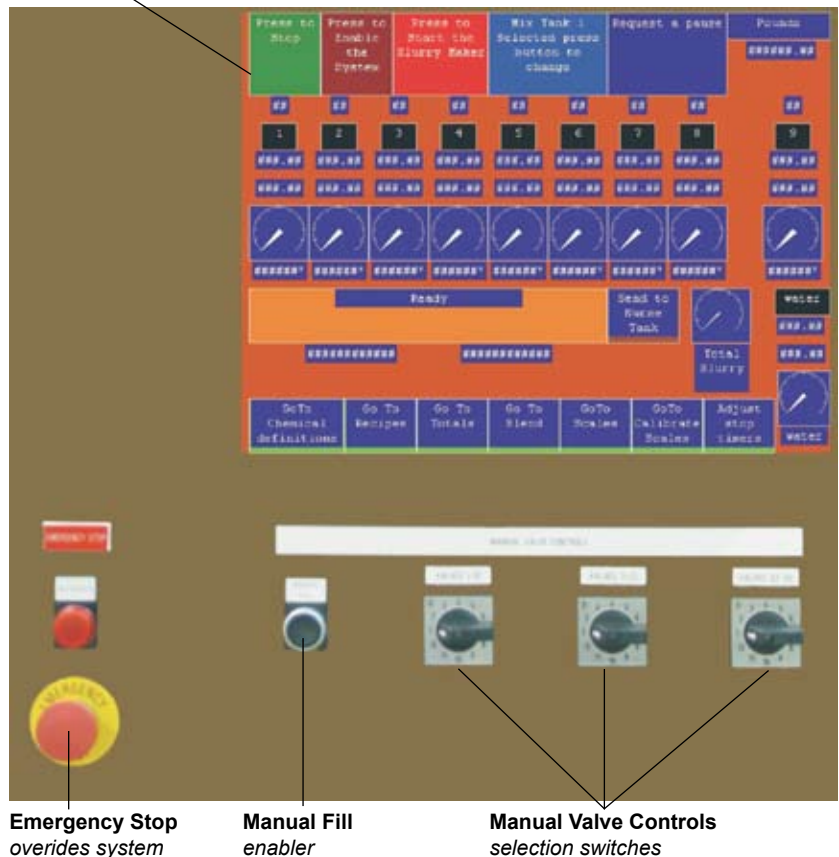
The system allows up to five automated pauses during the operation for the introduction of dry chemicals. In order to monitor and account for their weight, all dry chemicals will be introduced into the main blend PSD slurry tank.

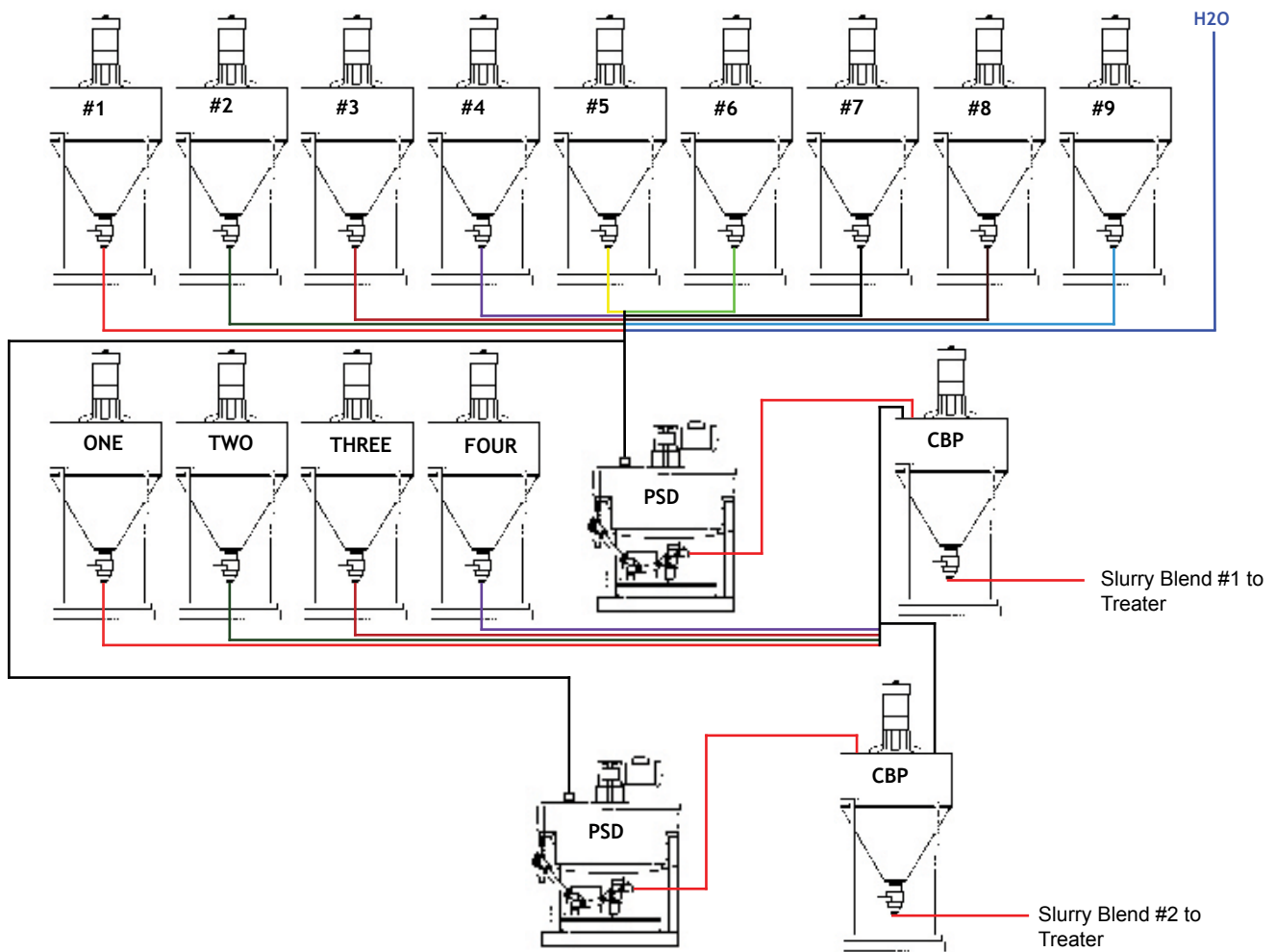
The System status display on the main screen will keep the operator apprised of ongoing operations or failure indications.

After all other chemicals have been introduced, the AWDS adds the rest of the water (10% - 50% as selected by the operator) to the PSD slurry tank for final blending.

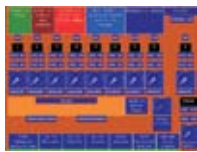
Note: It is normal for the pumps to momentarily turn on and off as the required volume is approached (this allows for the scale to stabilize).

Touch sensitive graphical interface LCD display screen





AWDS Mixing & Blending Process



Based on a pre-determined recipe, the AWDS PLC will select up to nine (9) chemicals from CBP tanks (1-9) plus water to make a slurry mix in the PSD tank. It then sends the slurry mix to the CBP holding work tank. Up to four (4) additional chemicals can be added to the CBP holding work tank for blending. The treating system PLC will select the slurry blend from the CBP holding work tank for final application. From one hundred (100) user-defined recipe options, the AWDS can supply the treating system with up to two slurry blends.

Technical information expressed in this document is for reference purposes only, subject to change without notice. If certified dimensional drawings are required, call 1.800.634.6738.



Bayer CropScience

Bayer CropScience
4895 12th Avenue East
Shakopee, Minnesota, 55379
USA

www.bayercropscienceus.com



Advanced
Seed Treatment
Technology