

CF-80

Continuous Flow Seed Treater

SPECIFICATIONS			
HOPPER CAPACITY	1-1/2 bushels		
DRUM rpm	57 - 1/2 rpm		
DRUM MOTOR	115 volt	1725 rpm	60 hz
POLY TANK CAPACITY	4 gallons		
AGITATION MOTOR	115 volt	283 rpm	60 hz
VARIABLE SPEED PUMP	115 volt	up to 1000 ml/min.	60 hz
MACHINE WEIGHT	240 lbs.	109 kg	



Gustafson

Advanced
Seed Treatment
Technology

Features & Benefits

The CF-80

Ideal for a variety of small volume seed treatment applications on alfalfa, barley, wheat, corn, and sunflower seeds.

Auxiliary Four Gallon Tank Assembly

- 4.5 gallon poly tank with hinged lid
- variable speed L/S pump w/control
- 115v/1ph/60hz agitation gearmotor
- closed calibration system
- standard in-line filter

Compact, Portable & Lightweight

easy to transport for field installation treating.

Control Panel

for drum, agitation and pump.

Adjustable Inlet Hopper

for improved seed flow control.

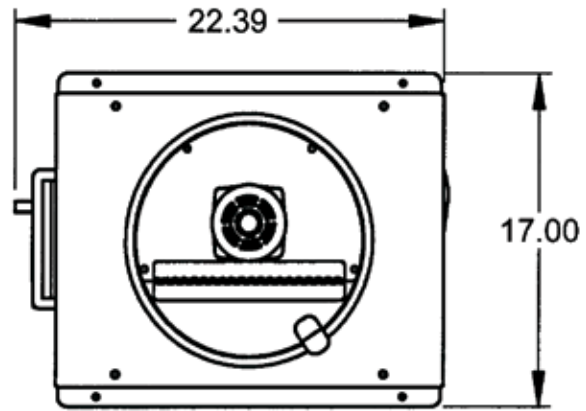
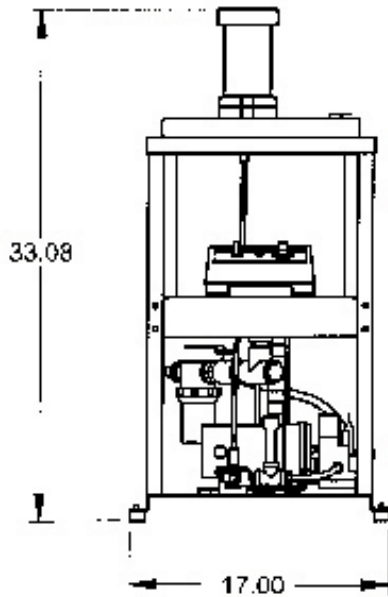
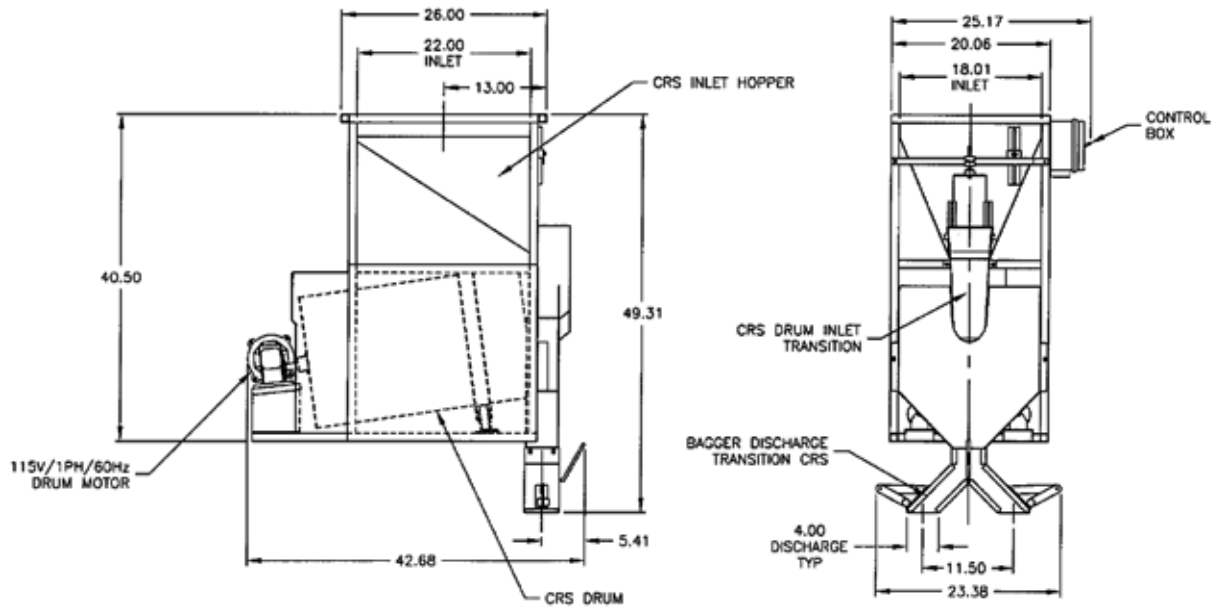
Drum Guards

for improved worker safety.

Double Bagger Discharge

for increased bagging capacity.





Four gallon poly tank

Technical information expressed in this document is for reference purposes only, subject to change without notice. If certified dimensional drawings are required, call 1.800.634.6738.



Bayer CropScience



Bayer CropScience
4895 12th Avenue East
Shakopee, Minnesota, 55379
USA

www.bayercropscienceus.com