



Recommended for use in Seed Treating Systems



Loss-in-weight pump stations draw chemical from bulk or premix tanks and accurately weigh and dispense them to the CBT Treater. The amount of chemical dispensed is based on a pre-selected batch recipe, set up on the CBT control panel.

The treater PLC will automatically adjust the amount of chemical if there is a change in the seed weight, ensuring consistent chemical delivery for improved seed treatment accuracy.

Features & Benefits

- Removable 20 liter stainless steel tank
- Removable Pump Shelf
- 20 liter tank spill containment tray
- Heavy-duty stainless steel frame assembly
- Air filter regulator, 1cfm @ 80psi
- Flow equalizer
- Load cell junction box w/60ft 5 conductor cable

20 Liter Pump Stand Dimensions: Height 64.62" Length 44.04" width 32.00"



Transfer Pump

- Draws chemical from premix tanks, fills 20 liter tank
- 1/2hp, 460V, 60Hz, 1FLA motor
- 25' 16-4 SO high voltage power cord (motor)



Dosing Pump

- Sends chemical to the CBT atomizer
- 1/2hp, 480V, 60Hz, 0.95FLA motor
- 25' - 16-4 SO high voltage power cord (motor)
- 25' - 5 conductor low voltage (control wire)
- 60' - 2 conductor low voltage (analog speed signal)
- 16mm pump element



Pump Junction Box

- Main pump junction box connects up to 3 other pump stations
- Main pump junction box connects to CBT main control box



20 Liter Tank Level Sensor

- Connects to CBT main control, signal chemical level
- Low voltage sensor cable, 2 meter
- 3-pin sensor patch cable, 5 meter

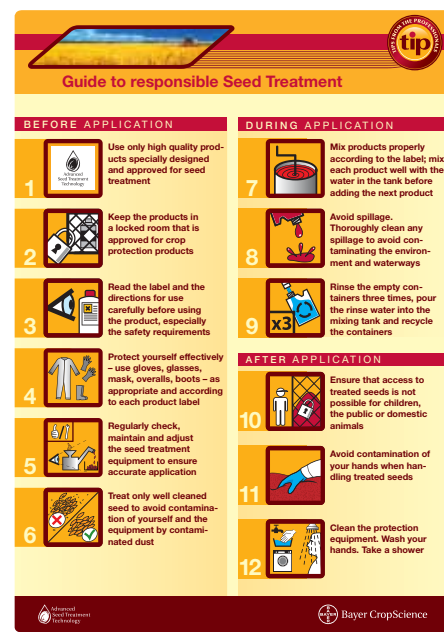


20 Liter Tank lid

- Lift/Lower Operation Switch

Value Added Options

- 20 Liter Pump Station
- Double Stacked 20 Liter Pumps
- 1/2 Liter Low Weight Pump Station



Bayer CropScience

Bayer CropScience LP
 4895 12th Avenue East
 Shakopee, Minnesota - USA
www.bayercropscience.us
 Phone: +1 952 445 6868
 Toll Free: 1 800 634 6738
 E-mail: equipment@bayer.com

Before using any crop protection product you should read and carefully follow directions, cautionary statements, and other information appearing on the product label. Our technical information is based on extensive testing and is, to the best of our current knowledge, true and accurate but given without warranty as the conditions of use and storage are beyond our control. Descriptions and property data of the product do not contain any statement as to liability for possible damage.

BCSPUMPSTATIONS05022012